

69 Keble Court

Church Crookham, Fleet



Offer price shown is a **£15k** saving on the remaining new apartment!



This brand new, second floor apartment features characterful vaulted ceilings and far-reaching countryside views from its south-east facing balcony. The spacious and bright living/dining room leads through to a stylish modern kitchen, complete with integrated appliances. There are two bedrooms plus a hallway with shower room and cloakroom.

One Reception / Kitchen / Two Bedrooms / Shower Room / Balcony / Hall / WC

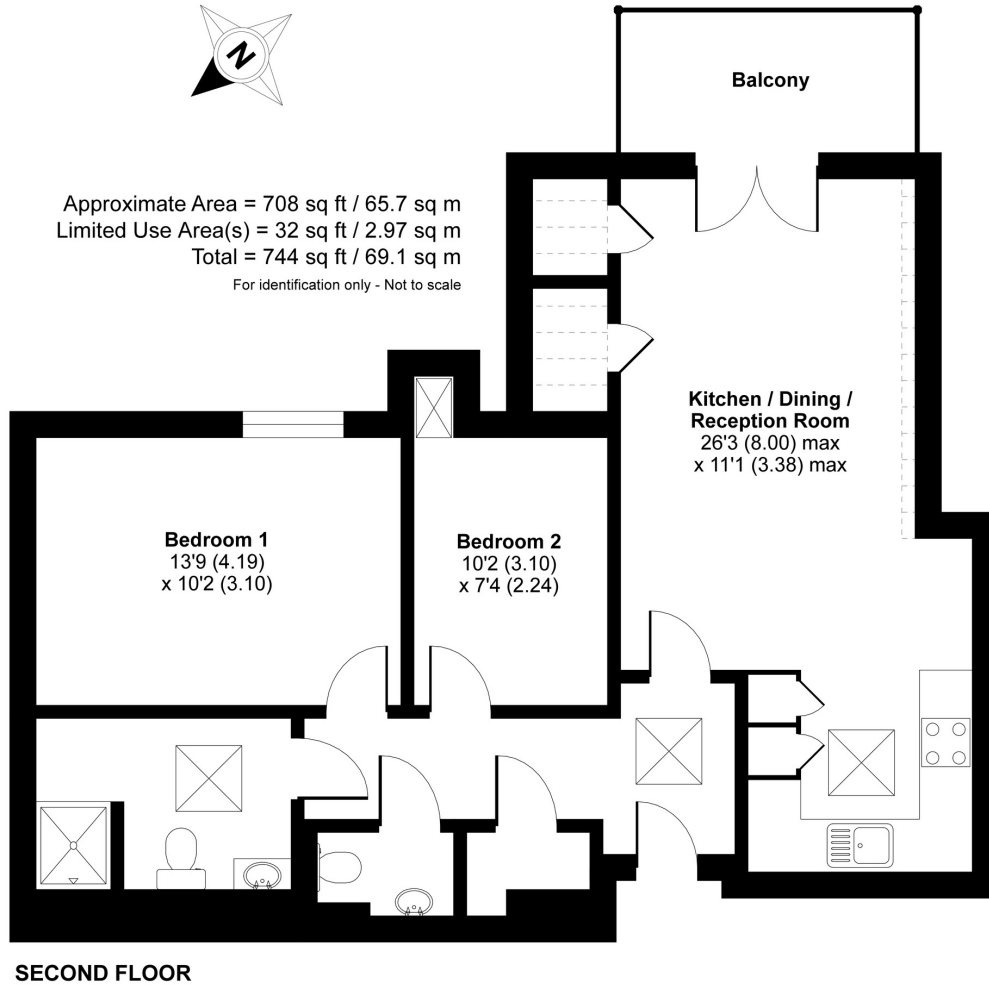
£296,000



www.anchor.org.uk

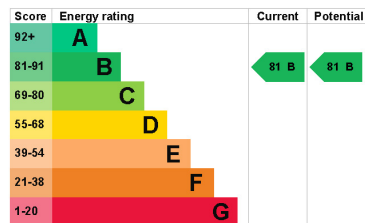
69 Keble Court

"We are very happy with our new home and the welcome we've received convinces us that we've really made the right choice. We are now looking forward to enjoying our new life here."



Key Facts

- Lease: **125 years from 1st Sept 2018**
(approx. 120 years remaining)
- Service Charge: **£420.57 pcm (£96.79 pw)**
(reviewed annually, updated from 1st April)
- Ground Rent: **£500 per year**
(to be reviewed every 25 years, next review is due in 2043)
- Council Tax band: **C**
- Sinking Fund: **3% on sale**
- Age Criteria: **60+ years for females and 65+ years for males**
- Energy rating:



Keble Court

Located in the charming village of Church Crookham in Hampshire, Keble Court enjoys a semi-rural outlook and is close to a range of amenities. From the luxurious apartments through to the first-class facilities, every feature has been designed to meet the specific needs of older people. This is a place where comfort, community and complete peace of mind all come as standard. And you'll be pleased to find more than a few unexpected luxuries around Keble Court. The highly popular Vista Café and the hairdressing/beauty salon are just two examples that make this development distinctive.

We assume no responsibility for any statement that may be made in these particulars. These particulars do not form part of any offer or contract and must not be relied upon as statements or representations of fact. Any areas, measurements or distances are approximate. The text, photographs and plans are for guidance only and are not necessarily comprehensive. Virtually furnished images may be used for marketing purposes. We have not tested any services, equipment or facilities. Purchasers must satisfy themselves by inspection or otherwise.